



Uinta County Connection

A Publication by the Uinta County Conservation District



Jan 2007

UCCD Is Ushered Into The Age Of Technology!

Take advantage of our new website at www.uintacountycd.com. You can download forms for tree sales and other technical assistance opportunities, check out our public workshops and new ideas, and learn more about what we do! We are striving to make our services as easy and personable as possible, and with our new website, we hope that you will enjoy the ease of answering questions and finding information from your own home! In fact, all of our newsletters are now posted on the website, so if you ever want to read an old article, it's right there on your computer. Email us with your comments, and have fun navigating!



Inside this issue:

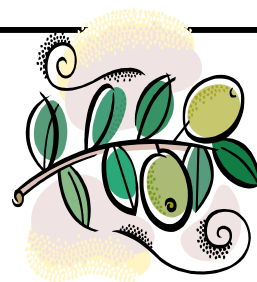
Time to Talk Trees	2
Windbreak Cost Share Program	2
Barnyards & Backyards	2
Septic System Success	2
Proper Disposal & Recycling	3
Upper Bear River	3
Wetland Reserve Program	3
Newsletter for Educators	4
Trial Grass Plantings	4
Digging With Spades	4
Wetland Reserve Program Con't	5
Contact information	6

Blacks Fork/Smiths Fork Watershed Plan: Year 2

UCCD and the Blacks Fork/Smiths Fork Steering Committee have successfully completed the first year of the Blacks Fork/Smiths Fork Watershed Plan implementation. The watershed plan was written as a result of the impaired listings of the rivers for bacteria contamination and excessive sediment. Many efforts were made to educate residents about the water quality impairments and more importantly, projects to reduce contamination were installed. To see a complete report of our accomplishments, stop by our office. Some things we will be working on the first part of 2007 include an Irrigation Technology workshop on February 21st @ 2:00PM at the Lyman Town Hall, a "Living on a Few Acres" workshop, and a Rangeland Management workshop. We will continue to offer cost share assistance on any projects that will improve water quality and the watershed. The **Septic System Remediation** and **Animal Feeding Operation cost share programs** are available throughout 2007. For more information, or if you have a possible project, contact the Conservation District or visit our new website.

Russian Olive Discussion Planned

Cheyenne—The Wyoming board of Agriculture will hold a public hearing Jan.24 from 8 to 9:30 a.m. to discuss the addition of Russian olive to the Wyoming designated Weed and Pest List. The public hearing will be held in the Wyoming Dept. of Ag conference room located at 2219 Carey Ave., Cheyenne. For additional info, Contact Slade Franklin at 307-777-6585





TIME TO TALK TREES



With the recent snow fall, have you found yourself spending a lot of time digging out your driveway? If you want to save yourself some time and energy, consider planting some trees and shrubs to act as a living snow fence, and prevent the snow from drifting in those highly used areas. The Uinta County Conservation District is now taking orders for their 2007 spring seedling tree and shrub season. We can also help you design a planting that will fit your needs.

The Conservation Districts Tree Program was developed several years ago to help homeowners and landowners create effective conservation plantings that can be used for wind barriers, noise barriers, snow fences, erosion control, streambank stabilization, backyard habitat and more. You can order bareroot seedlings in bundles of 50, and the regular and small potted trees come in lots of 30. The District would suggest partnering up with other landowners and splitting a bundle if you don't need the full bundle of 50 or lot of 30.

UCCD encourages you to order early because of the high demand on the seedling trees. You can visit our website to download an order form or stop by the office to pick one up. If you are in the Evanston area, order forms are available at the Cooperative Extension Office. Orders will be taken from now until April 17th, 2007 and the trees will be delivered in early May. It is important that a planting plan be in place before any trees are ordered or planted. If you need assistance in planning a windbreak or other type of tree planting, please call the district office. UCCD staff is willing to visit with you in the office or meet you at the planting site and provide technical assistance where needed. You may even be eligible to participate in the districts windbreak cost share program.

If you have any questions, please stop by the District office to visit and browse through the districts "Book of Trees" full of color pictures and descriptions of the trees. The office is located on the second floor of the Lyman Town Hall. You can also call the office at 307-787-3794 ext. 4. or go to our new website at www.uintacountycd.com and download an order form.

District offers Windbreak Cost Share Program

To assist landowners with the cost of installing quality windbreaks, the Uinta County Conservation District has developed a Windbreak Cost Share Program. Through this program, the Conservation District can pay up to 50% of the cost of installing a windbreak on projects that meet the minimum requirements. To be eligible to participate, you must own at least 3 acres of land where the planting is to be established and the planting site must be in Uinta County. A more detailed description of the program guidelines and conditions are available from the Conservation District or on the Districts new website at www.uintacountycd.com. You may design your own windbreak plan or contact the Conservation District for technical assistance. If you are interested in participating or learning more about the windbreak program, please contact the Conservation District at 787-3794x4 or by email at kerri.sabey@wy.nacdn.net.



BARNYARDS & BACKYARDS

The Winter 2006 issue of the Barnyards & Backyards publication is now available. Stop by the District office for a complimentary copy. If you like it, you can get a yearly subscription for only \$6.00!

This publication is perfect for the small acreage landowner, new landowner, or backyard enthusiast. You can also visit their website at : Barnyardstobackyards.com

Septic System Cost Share Program a Success

As part of the Blacks Fork/Smiths Fork Watershed Plan, a cost share program to remediate failing septic systems was sponsored by the Conservation District. Faulty septic systems are a potential source of E.coli contamination. E.coli is a bacteria that can come from three sources; humans, wildlife and livestock, and can make a person very sick if ingested. To reduce the risk of human contamination, the District helped seven homeowners repair their septic systems by paying for 50% of the cost of the project. Five of the projects were installed on the Blacks Fork River, one on the Smiths Fork and the other on Willow Creek, a tributary to the Smiths Fork. Overall, the program was a success and all of the homeowners now have working septic systems that are up to county code and will no longer be at risk for regulation from the Department of Environmental Quality. More importantly, the septic systems will no longer be contributing bacteria to our surface water here in the Bridger Valley.

The District will continue to offer the Septic System Remediation Cost share program throughout 2007. If you feel your system may be at risk for contaminating surface water, contact the Conservation District or visit our website at www.uintacountycd.com for more information and an application. The Conservation District is not a regulatory agency and all information will be kept confidential. All of the Districts programs are voluntary.

Proper Disposal or Recycling of Waste

One of the concerns of the Upper Bear River Steering Committee is pollutants such as sediment, road salt, fertilizers, herbicides and pesticides accumulating on land surfaces and being flushed directly into surface waters through storm sewers. They are also concerned that storm sewers are being used as an improper means of discarding waste. Therefore, the committee decided that providing a list of local sites for proper disposal or recycling of waste in Uinta County would give citizens several alternatives to properly dispose of waste rather than putting it somewhere that would threaten the quality of the water in the Bear River. The following is a list of local sites for the proper disposing of waste:

Local Sites :

Bridger Valley Landfill	4461 Hwy. 412	782-3556
Uinta County Solid Waste Disposal Facility	3132 County Rd. 108	799-5360
Peak Recycling(Don Nichols)	Hwy 412	787-3432 (only ferrous & non-ferrous metal)
Uinta Recycling Inc.	100 China Mary Rd(Across from Old Mill Restaurant in Evanston) 789-5878 Takes cardboard, paper, glass, & appliances	
Gary's Trash Service	786-2584	
Wyoming Waste Systems	173 Jamison Dr. Evanston	1-800-479-9173
Big-Pee Sanitation	Mountain View782-6203 (porta-potty rental, septic tank pumping, potable water, trash baskets)	
Rocket-Sanitation	6022 N. Hwy 89, Evanston789-9202 (porta-potty rentals, septic tank pumping, commercial & Private)	
Jim's Service(recycling)	1443 HWY 30E & I-80 Evanston 789-9546 or 800-281-9546	
May 2007	Evanston will host a hazardous waste pick-up at the Fairgrounds. Pesticide, herbicide, insecticide, cleaning solution's, paint, & batteries can be disposed of at this time. For information on this collection contact: John Turner @ 783-0311 Solid Waste Coordinator	

Upper Bear River Watershed Plan Update

We are now beginning year two of the Upper Bear River Watershed Plan implementation. We met many of our goals last year for education and outreach and would like to focus more on getting projects on the ground for 2007. The Conservation District has funding available to assist landowners with the cost of installing practices that will improve water quality. Projects such as irrigation improvement, bank stabilization, erosion control, small acreage improvements, grazing management and animal feeding operations are all eligible for cost share assistance from the Conservation District. The District is also planning a couple of workshops in the near future including a "Living on a Few Acres Workshop #2" and an irrigation technology workshop. We plan to continue our education and outreach efforts throughout the year about the Bear River watershed and the importance of good water quality . If you or your organization has an idea for a project that will benefit the Bear River watershed, please contact the Conservation District.

Wetland Reserve Program

The Wetlands Reserve Program (WRP) is a voluntary program that provides technical and financial assistance to eligible landowners to address wetland, wildlife habitat, soil, water, and related natural resource concerns on private lands in an environmentally beneficial and cost-effective manner. The program provides an opportunity for landowners to receive financial incentives to restore, protect, and enhance wetlands in exchange for retiring marginal land from agriculture.

Benefits:

- Receiving financial and technical assistance in return for restoring, protecting, and enhancing wetland functions and values.
- Seeing a reduction in problems associated with farming potentially difficult areas.
- Having incentives to develop wildlife recreational opportunities on the land.

Newsletter For Educators



We have developed a newsletter specifically for educators to keep them up to date on our educational resources, available lessons, programs, and special events. The newsletter is called the Education Den, and will be produced in the Fall and Spring each year. Teachers, parents, scout leaders, and anyone who educates should know just how easy it is to teach natural resource education by incorporating it into school subjects, games, and other fun activities. And best of all, we will keep you up to date on local workshops, including our Outdoor Classroom Workshop, which offers renewable credit and exciting curriculum ideas! If you or someone you

know would be interested in receiving our free newsletter for educators, please let us know by calling or emailing Tina at tina.price@wy.nacdnet.net

UCCD Works With Landowner on Trial Grass Plantings

In order to gather more information about the productivity of different grass species in Uinta County, UCCD is working with the Bridger Plant Materials Center out of Montana, Dana Stone with Wyoming State Forestry, Owen Peterson, landowner, and NRCS to complete a trial planting of dryland and irrigated pasture grasses. The planting will be completed in the area called Rocky Springs, just before you enter the Wasatch National Forest. As you drive south on the State Line Dam road, just after you cross the first cattle guard, look down and to the west and you will see two large, fenced plots with bright orange ribbons on the wires. These are the two trial plots. One of the plots is in an irrigated, or wetter area, the other is on dryland. Grass species that will be planted in the wetter area will consist of meadow brome cultivars Cache, Regar, Fleet, Paddock, Montana, McBeth and a smooth brome cultivar, Lincoln. The dryland grasses will consist of Russian Wildrye cultivars Bozoisky II, Mankota and Bozoisky-Select.

Along with the grasses, different species of trees and shrubs will also be planted in the plots. The fencing and the fall site prep work was completed by Owen and the 2007 spring planting of the grasses, trees and shrubs will be done with the help of Owen, UCCD and Wyoming State Forestry. The plots will be watched and studied by everyone involved to gather as much information as possible about the productivity of the different species.



DIGGING WITH SPADES

By Tina Wojtaszek, Education Coordinator



Have you ever wondered how in the world toads can survive the winter? Ok, well maybe you haven't, but there is one kind of toad that is worth reading about- the spadefoot! They carry the name due to a tiny black "spade" of tough tissue on their hind feet which, believe it or not, they use just like a spade to dig in soft soil (it seems there is no human tool that hasn't already been invented in nature)! There is one spadefoot toad found near us in Uinta County: the Great Basin Spadefoot. They must be near water to breed in early April, but they have the ability to survive hot, dry weather and cold winters by simply digging their own little burrow. They have also been seen digging themselves out of danger when a predator is near! Now imagine if you were the size of a Great Basin Spadefoot (around 2 inches long) and you had to survive through the winter with no clothing (not even fur!) and no shelter. A hole in the dirt might sound pretty appealing! They can consume enough food to survive for up to a year without eating, and can dig their way to a mini warmer climate. If only we could use our spades to dig our way to a tropical island this time of year!

The U.S. Department of Agriculture (USDA) prohibits discrimination in all its programs and activities on the basis of race, color, national origin, age, disability, and where applicable, sex, marital status, familial status, parental status, religion, sexual orientation, genetic information, political beliefs, reprisal, or because all or a part of an individual's income is derived from any public assistance program. (Not all prohibited bases apply to all programs.) Persons with disabilities who require alternative means for communication of program information (Braille, large print, audiotape, etc.) should contact USDA's TARGET Center at (202) 720-2600 (voice and TDD). To file a complaint of discrimination write to USDA, Director, Office of Civil Rights, 1400 Independence Avenue, S.W., Washington, D.C. 20250-9410 or call (800) 795-3272 (voice) or (202) 720-6382 (TDD). USDA is an equal opportunity provider and employer.

How WRP Works:

Landowners and Tribes may file an application for a conservation easement or a cost-share restoration agreement with the USDAA to restore and protect wetlands. Participants voluntarily limit future use of the land, but retain private ownership.

The program offers three enrollment options:

Permanent Easement. This is a conservation easement in perpetuity. Easement payments for this option equal the lowest of the three amounts: the agricultural value of the land, an established payment cap, or an amount offered by the landowner. In addition to paying for the easement, USDA pays 100% of the costs of restoring the wetland.

30-Year Easement. Easement payments through this option are 75% of what would be paid for a permanent easement. USDA also pays up to 75% of the restoration costs.

For both permanent and 30-year easements, USDA pays all costs associated with recording the easement in the local land records office, including recording fees, charges for abstracts, survey and appraisal fees, and title insurance.

Restoration Cost-Share Agreement. This is an agreement (generally for a minimum of 10 years) to re-establish degraded or lost wetland habitat. USDA pays up to 75% of the cost of the restoration activity. This enrollment option does not place an easement on the property

Eligibility:

To offer a conservation easement, the landowner must have owned the land for at least 12 months prior to enrolling it in the program, unless the land was inherited, the landowner exercised the landowner's right of redemption after foreclosure, or the land owner can prove the land was not obtained for the purpose of enrolling it in the program. To participate in a restoration cost-share agreement, the landowner must show evidence of ownership.

To be eligible for WRP, land must be restorable and be suitable for wildlife benefits.

This includes:

- Wetlands farmed under natural conditions;
- Farmed wetlands;
- Prior converted cropland;
- Farmed wetland pasture;
- Farmland that has become a wetland as a result of flooding;
- Rangeland, pasture, or production forest land where the hydrology has been significantly degraded and can be restored;
- Riparian areas which link protected wetlands
- Land adjacent to protect wetlands that contribute significantly to wetland functions and values; and
- Previously restored wetlands that need long-term protection.

Ineligible Land. Ineligible land includes wetlands converted after December 23, 1985; lands with timber stands established under a Conservation Reserve Program contract; Federal lands; and lands where conditions make restoration impossible.

Uses of WRP Land

On acreage subject to a WRP easement, participants control access to the land and may lease the land for hunting, fishing, and other undeveloped recreational activities. At any time, a participant may request that additional activities be evaluated to determine if they are compatible uses for the site. This request may include such items as permission to cut hay, graze livestock, or harvest wood products. Compatible uses are allowed if they are fully consistent with the protection and enhancement of the wetland.

For more information, please contact the NRCS in the USDA Service Center in the Lyman Townhall or call 307-787-3211, ext. 101.

Uinta County Conservation District

P.O. Box 370
100 East Sage Street
Lyman, WY 82937

PRSR STD
AUTO
U.S. Postage Paid
Lyman, WY
Permit No. 11

CHANGE SERVICE REQUESTED

Visit Our New Website @ www.uintacountycd.com



Upcoming Workshops to watch for:

IRRIGATION TECHNOLOGY WORKSHOP, FEBRUARY 21ST AT 2:00PM, LYMAN TOWN HALL, RSVP BY CALLING 787-3794 X4

“Living on a Few Acres” Evanston & Bridger Valley, February/April

Rangeland Management Workshop April/May



**Seedling Tree
Order Deadline:
4/15/07**

Uinta County Conservation District

P.O. Box 370, 100 East Sage Street, Lyman, WY 82937

307-787-3794 x4 E-mail: kerri.sabey@wy.nacdnet.net; tina.price@wy.nacdnet.net

Website: www.uintacountycd.com

Board of Supervisors

Shaun Sims, Chairman

Kelly Guild, Vice Chairman Kevin Condos, Member

Spencer Eyre, Sec./Treasurer Dennis Cornelison, Member

UCCD Staff

Kerri Sabey, District Manager

Tina Price, Education Coordinator

Pat Watson, Administrative Assistant

USDA-NRCS Staff

Jeff Lewis, District Conservationist

Kevin Fackrell, Soil Conservation Technician

NRCS phone: 307-787-3211